

HILLSBORO COUNTRY CLUB PLAT ONE

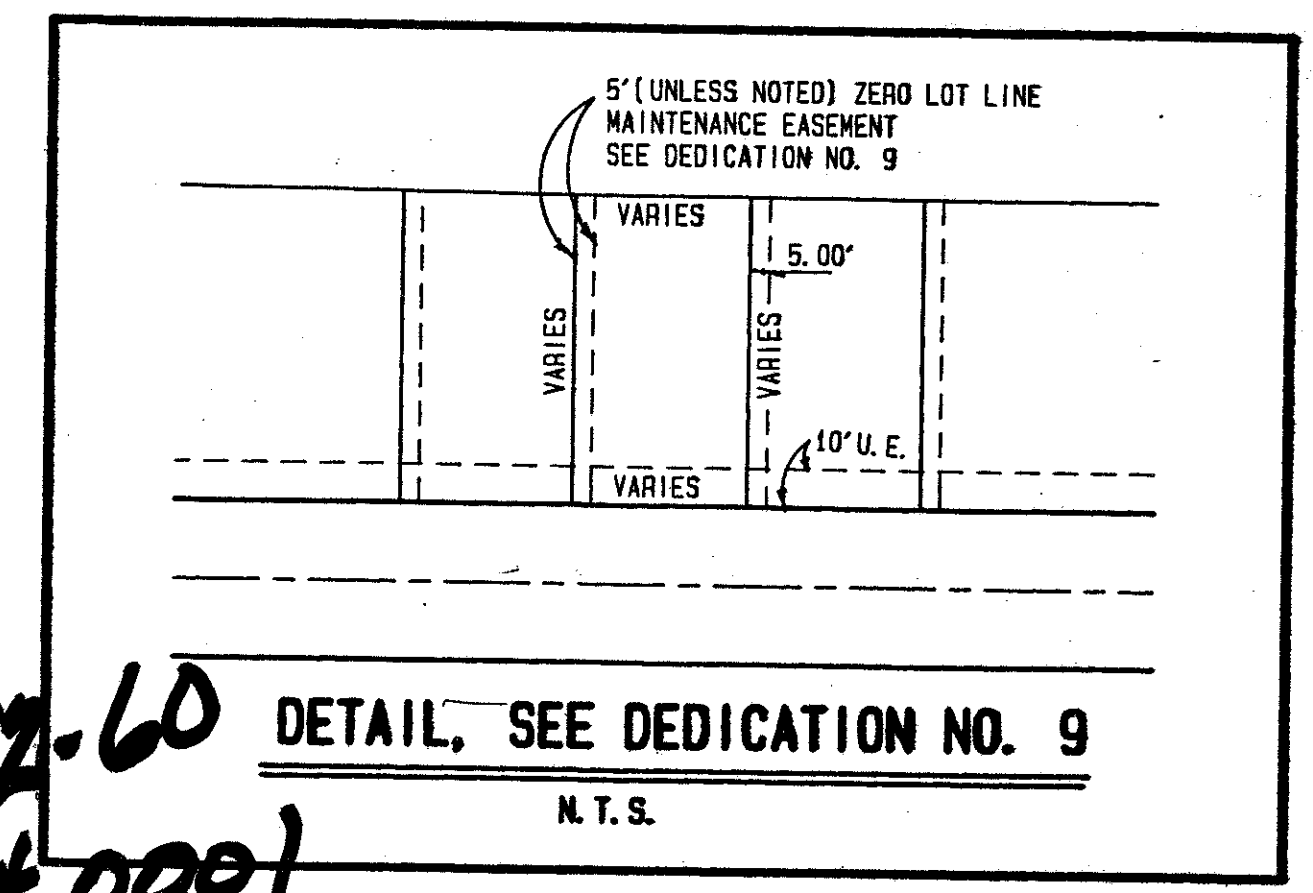
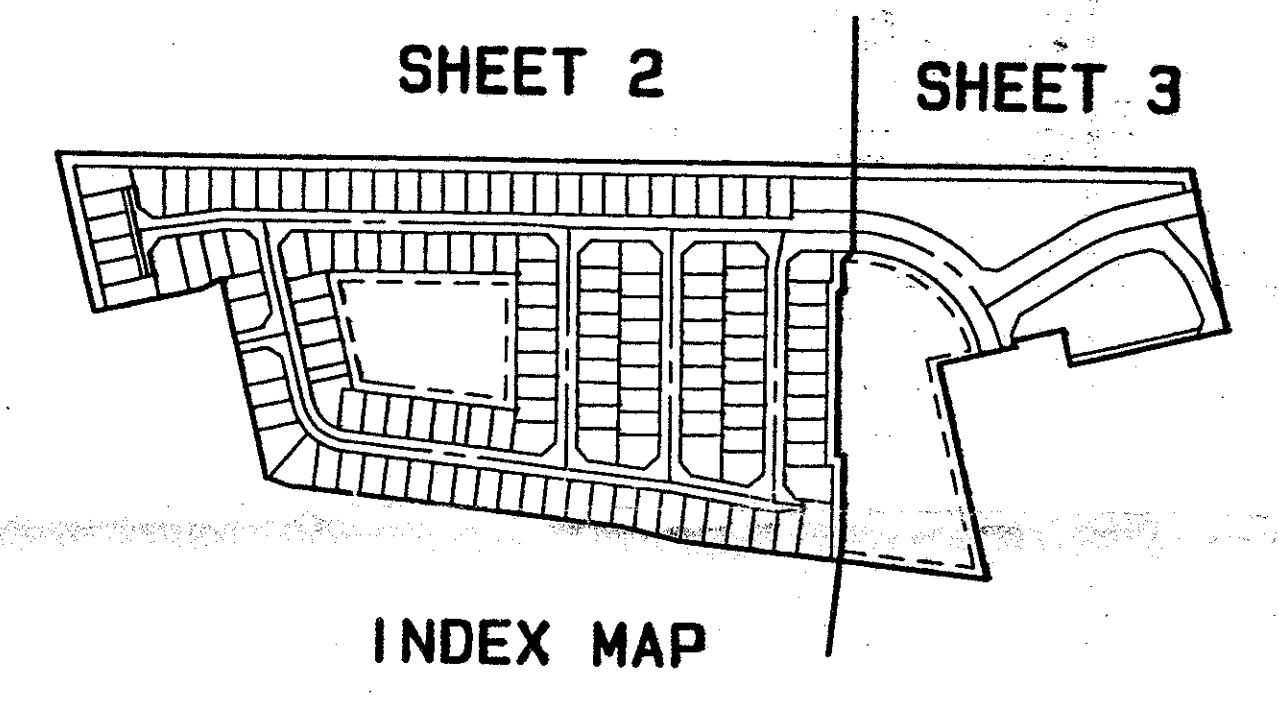
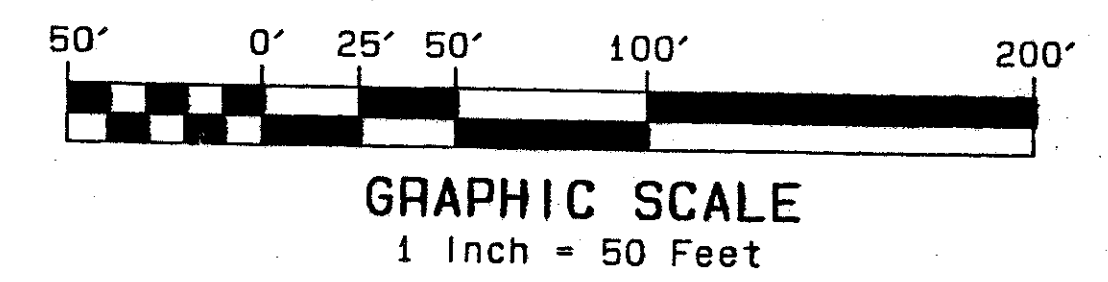
A PLANNED UNIT DEVELOPMENT
 SITUATE IN SECTION 36, TOWNSHIP 47 SOUTH, RANGE 41 EAST,
 PALM BEACH COUNTY, FLORIDA
 FEBRUARY 1994 SHEET 3 OF 3

619-001

22

STATE OF FLORIDA SS
 COUNTY OF PALM BEACH
 This plat filed for record at
 this ___ day at
 19 ___ and duly recorded in
 Plat Book No. ___ on page ___
 DOROTHY H. WILKEN, Clerk
 Circuit Court
 By: _____ D.C.

N. E. CORNER
 SEC. 36-47-41



- LEGEND:
- L.M.A.E. = LAKE MAINTENANCE ACCESS EASEMENT
 - L.M.E. = LAKE MAINTENANCE EASEMENT
 - R.B. = RADIAL BEARING
 - U.E. = UTILITY EASEMENT
 - D.E. = DRAINAGE EASEMENT
 - P.B. = PLAT BOOK
 - O.R.B. = OFFICIAL RECORDS BOOK
 - P.P. = PAGE
 - P.S. = PRIVATE STREET
 - R.A.S. = RESIDENTIAL ACCESS STREET
 - D.T. = DRIVEWAY TRACT
 - P.C.P. (PERMANENT CONTROL POINT) NO. 4380
 - P.R.M. (PERMANENT REFERENCE MONUMENT) NO. 4380
 - Z.L.L.M.E. = ZERO LOT LINE MAINTENANCE EASEMENT

STATE ROAD NO. 7 (U.S. 441)
 O.R.B. 5805 PAGE 268

WESTERLY RIGHT OF WAY LINE
 OF STATE ROAD NO. 7
 (O.R.B. 5805, P. 268)

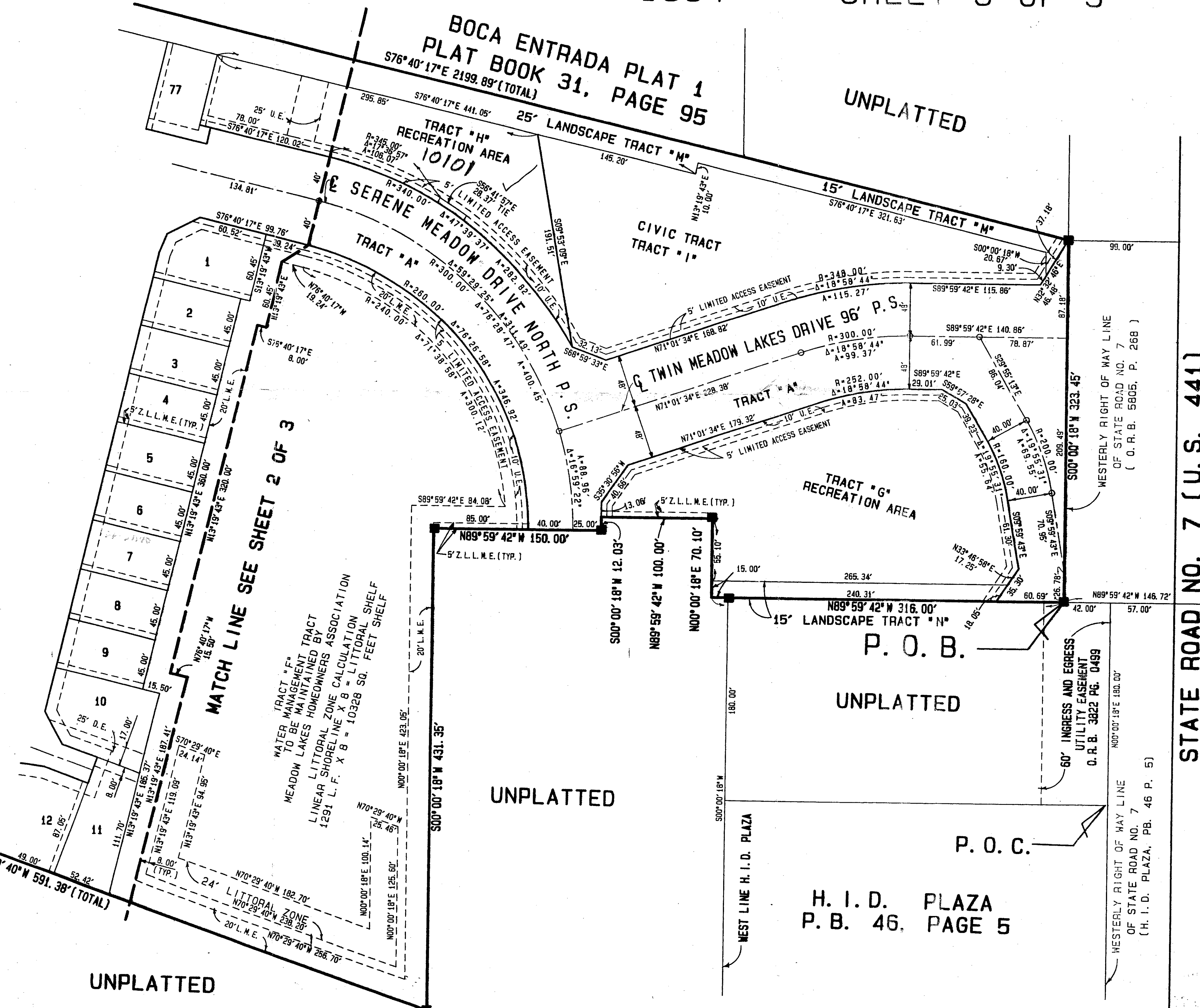
WESTERLY RIGHT OF WAY LINE
 OF STATE ROAD NO. 7
 (H. I. D. PLAZA, PB. 46 P. 5)

S. E. CORNER
 SEC. 36-47-41

PET. 92-60
 ALLOC. # 0001

0619-001 72/22

ATLANTIC - CARIBBEAN MAPPING, INC.
 PROFESSIONAL LAND SURVEYORS
 357 LIANA DRIVE
 WEST PALM BEACH, FLORIDA 33415
 (407) 687-5900
HILLSBORO COUNTRY CLUB PLAT ONE



TAZ 780

SUBDIVISION # HILLSBORO C.C. PL1
 BOOK 72 PAGE 20
 FLOOD MAP #
 FLOOD ZONE
 ZONING PDD
 QUAD # 69
 SE 92-60
 ZIP CODE
 PUD NAME HILLSBORO C.C.

UNPLATTED

UNPLATTED

UNPLATTED

H. I. D. PLAZA
 P. B. 46, PAGE 5